

DYM CO., LTD.

Plain Bearings : A Global Leader

DYM bearings allow for optimized performance in a broad range of rotating equipment with unmatched knowledge and experience.

The best support in your business.



Index

HISTORY

DYM ORGANIZATION

OVERALL CAPACITY

QUALITY MANAGEMENT SYSTEM/ CERTIFICATES

CERTIFICATE OF APPROVAL

CUSTOMERS

INNOVATION

MAIN FACILITIES

NX9 MODEL BASED MANUFACTURING

ENTERPRISE RESOURCE PLANNING SYSTEM

POINT OF PRODUCT SYSTEM

MANUFACTURING PROCESS

MANUFACTURING LEAD TIME

WEBSITE – WWW.DYMBRG.COM

History

- MARINE DIESEL ENGINE PROJECT EXPERIENCE : 1981 ~ NOW
- POWER PLANT PROJECT EXPERIENCE : 1989 ~ NOW
- REDUCTION GEAR & COMPRESSOR EXPERIENCE : 1986 ~ NOW
- STEEL PLANT PROJECT EXPERIENCE : 1986 ~ NOW



STEEL PLANT



HYDRO



MARINE

1981



NUCLEAR

1989



THERMAL

1990



GEARBOX

1995



GAS TURBINE

2014

History

www.dymbrg.com

Marine Engine

DYM CO.,LTD.

- ▶ MAIN BRG. SHELL & COVER ASS'Y (RT96C)**
 - DIM : Ø D1050×L D990×B425
 - MAT'L : HOYT11R / SS400 / GS3B
- ▶ GUIDE SHOE- MIDDLE ASS'Y (RT96C)**
 - DIM : W820×H690×B135.5
 - MAT'L : HDYT11R / SC410(SHOE) / FC250(MIDDLE PART)
- ▶ CRANK PIN BRG. SHELL**
 - DIM : Ø D818×L D784×B309
 - MAT'L : HM07 / SS400
- ▶ SEGMENT ASS'Y (S08MG)**
 - DIM : Ø D1900×L D1390×T140
 - MAT'L : HM07 / FC300

DYM
PLAIN BEARING

- 1981** Established the company named "DONG YANG METAL IND.CO., LTD." in Young-do, Busan, Korea. JUNE 1, 1981.
- 1986** Localized the Tilting Pad Journal Bearing for the Centrifugal Compressor (32,000 RPM) and delivered to POSCO.
- 1987** Manufactured White Metal Bearing for the Engine (RTA84C, 54,000HP) of the Project APL #1 ~#5, delivered to HSD(EX.HANJUNG).
- 1989** Localized Turbine and Generator Bearing for Nuclear Power Station and delivered to DOOSAN (EX.HANJUNG).
- 1991** Built the second workshop in Dadae-dong, Busan, Korea.
- 1994** ISO 9002, Approved by DET NORSKE VERITAS Q.A.
- 1997** Qualified by FUJI Electronic, Japan as a Bearing supplier

History

www.dymbrg.com

LNGC Turbine Bearing

DYM CO.,LTD.

HP&LP 1ST WHEEL FDR & AFT BRG
• DIM : O.D480×I.D410.42×200(mm)
• MAT'L : SS400 / HOYTS172

HP&LP TURBIN THRUST PAD
• DIM : O.D259×I.D120×29.6(mm)
• MAT'L : BC3 / HOYTS172

GOVEND JOURNAL BRG
• DIM : O.D584×I.D304×B235
• MAT'L : HOYTS172 / SS400

1ST PINION FDR & AFT BRG
• DIM : O.D190×I.D140×B90
• MAT'L : HOYTS172 / SS400

- 1998** Developed the Tilting Thrust and Journal Bearing for Turbo-Chiller. (LS MTRON)
- 1999** Developed the Tilting Pad Journal Bearing for Centrifugal Compressor. (SAMSUNG TECHWIN)
- 1999** 7FH2 Bearing and delivered to DOOSAN. (EX.HANJUNG).
- 2000** Developed Sleeve Bearing (MHI Model) 39" & 42" for POSCO.
- 2001** Qualified by GE Power systems, U.S.A as a Steam Turbine & Generator Bearing supplier.
- 2001** Qualified by GE Oil & Gas Nuovo Pignone, Italy as a Centrifugal Compressor Bearing.
- 2002** Qualified by POSCO, Korea as a shell & Sleeve bearing supplier.
- 2003** Qualified by MAN B&W, Denmark as a Thin Shell Bearing supplier.

History

Industry Steel Plant
DYM CO., LTD.
www.dymbg.com

SHELL BEARING
• DIM : O.D1059 x I.D985 Bx736
• MAT'L : YG2 / SS400

SLEEVE BEARING
• DIM : O.D1063.3 x I.D961.3 x B43
• MAT'L : SCM445

STEADY REST BEARING
• DIM : O.D1700 x I.D1364 x B160
• MAT'L : HOYTS172 / SS400

PEDESTAL BEARING
• DIM : O.D310 x I.D203 x B203
• MAT'L : HOYTS172 / FCD45

DYM PLAIN BEARING

- 2003** Qualified by HITACHI, Ltd. Power Systems, Japan as a Bearing supplier.
- 2004** Qualified by TOSHIBA Corporation, Japan as a Generator Bearing supplier.
- 2004** Qualified by SEISA Gear LTD, Japan as a Thrust Pad Bearing supplier.
- 2004** Qualified by Mitsubishi Heavy Industries, LTD. Japan as a MET Turbo Charger Bearing supplier.
- 2004** Qualified by GE Power systems, USA as a 390H type Endshield Generator Bearing and delivered to Harbin electric machinery Harbin China.
- 2004** Qualified by HITACHI NICO, JAPAN as a Bearing Supplier
- 2005** Certified by BV as a White Metal Bearing for internal Combustion Engines.
- 2005** Qualified by GE Power systems, USA as a 330H type End shield Generator Bearing.
- 2007** Contract with FORMOSA for Gear Shaft Bearing in Taiwan for GE.

History

www.dymbrg.com

Power Plant Gas Turbine

DYM CO.,LTD.

▶ GAS TURBINE TILTING PAD BEARING
• DIM : O.D380×I.D230×130
• MAT'L : HOYT11R / B50A753

▶ SPAFJT 16" JOURNAL BEARING ASSY
• DIM : 0.0577×I.0408×T.285
• MAT'L : HOYT3172 / CR-COPPER ALLOY / S8400

▶ GAS TURBINE LINER BEARING
• DIM : O.D360×I.D255×210
• MAT'L : B21A14 / B50A753

▶ JOURNAL BEARING
• DIM : O.D317.4×I.D242.3×B127
• MAT'L : B21A14 / B50A517B2

DYM
PLAIN BEARING

- 2007** Supplied Thrust Plate for Nuclear Power to Nuclear Power Corporation India Limited.
- 2007** Qualified by GE for Gas Turbine Accessory Gear Unit, USA as a Gear accessory bearing.
- 2008** Qualified by SIEMENS, GERMANY as a Steam Turbine Bearing.
- 2008** Qualified by GE, Large Steam Turbine Generator Bearing
- 2009** Qualified by TOSHIBA for all of Nuclear Metal Bearing supplier.
- 2010** ISO 14001, OHSAS 18001 Approved by DET NORSKE VERITAS Q.A
- 2010** Supplied OM-1 PROJECT Bearing for Nuclear Power to Toshiba.
- 2010** Qualified by MITSUBISHI ELECTRIC, Japan as a Generator Bearing supplier.
- 2010** Qualified by ALSTOM, FRANCE as a Nuclear bearing supplier.

History

www.dymborg.com

Power Plant
Thermal Power Plant
DYM CO.,LTD.

SHORTEND BEARING
• DIM : O.D927xI.D534xH304
• MAT'L : B21A14 / B50A517B2

COMPLEX BEARING
• DIM : O.D1135, 3xI.D355xH340
• MAT'L : TEGOV73B / S25C

DBL TILT PAD BEARING
• DIM : O.D864xI.D376xH331
• MAT'L : B21A14 / B50A517B2

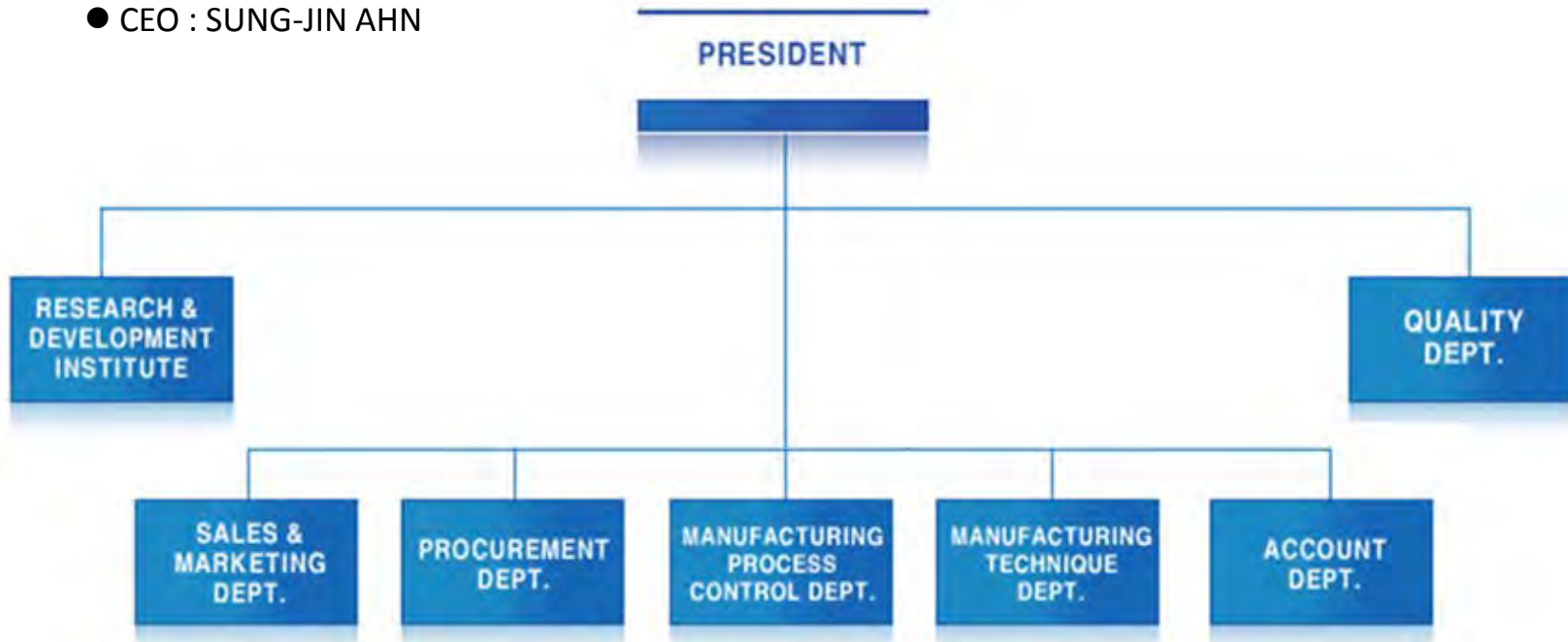
THRUST PLATE
• DIM : O.D742, 4xI.D457, 2xT38
• MAT'L : B21A14 / B11B17X

DYM
PLAIN BEARING

- 2011** Supplied AP1000 Bearing for Nuclear Power to Toshiba.
- 2012** Qualified by GE, 9E Gas Turbine Bearing.
- 2013** Qualified by GE, 7EA Gas Turbine Bearing.
- 2013** Qualified by GE, Packing Casing & Packing Head.
- 2013** Supplied Generator Seal Rings for Andritz Hydro.
- 2013** Supplied Journal Bearing for Steel Plant to BHEL.
- 2013** Supplied Main Bearing for Marine engine to BLOHM + VOSS.
- 2014** Approved by GE to manufacture Hardware
- 2015** Supplied High speed bearing for steam turbine to Larsen & Turbo in India.

DYM Organization

- CEO : SUNG-JIN AHN



Number of Employees : 50 (Office 18 / Workshop 32)

Quality Management System

QUALITY SYSTEM

SIX SIGMA

ISO 9002 CERTIFIED BY DNV IN 1994

ISO 9001;2008 CERTIFIED BY DNV IN 2003

ISO 14001;2004 CERTIFIED BY DNV IN 2010

OHSAS 18001;2007 CERTIFIED BY DNV IN 2010



TECHNICAL SUPPORTING FIRMS KIMS (KOREA INSTITUTE OF MATERIALS SCIENCE)

KTA (KOREA TECHNOPARK ASSOCIATION)

KTR (KOREA TESTING & RESEACH INSTITUTE)

BUSAN NATIONAL UNIVERSITY(MECHANICAL ELEMENT DESIGN LAB)

ECKA GRANULES® - SUPPLIER OF WHITE METAL INGOT

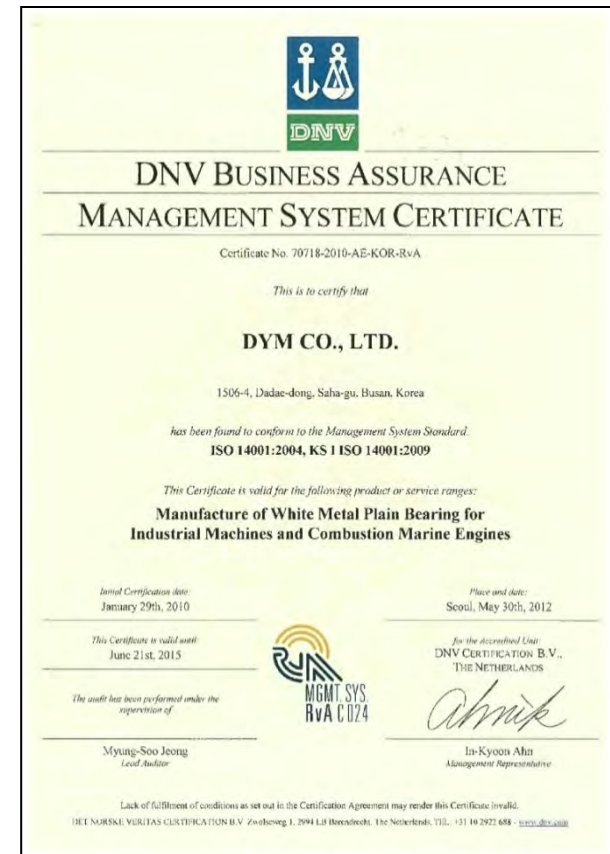
Quality Management Certificates



<OHSAS 18001>



<ISO 14001>



<ISO 9001>

Certificate of Approval

TOSHIBA

Doc.NO : VSRK0972119
Issued Date : 2009-12-21

Vendor Name : DYM CO.,LTD.
Address : 1906-4,DADAE-DONG,SAHA-GU,BUSAN,KOREA

Attention: Mr. Y. C. Ahn
(President)

Dear Sir,

This is the TOSHIBA CORPORATION KEIHIN PRODUCT OPERATIONS' report for the recent surveyor of your firm's Quality Assurance Program.

As a result of our evaluations, we are pleased to inform you that DYM CO.,LTD. has been certified as our Qualified Vendor.

Scope: BEARING METAL, SEAL RING, BASE METAL, (All Nuclear)

The extent of this qualification and brief summary of this audit results are shown on subsequent page(s) of this report.

If you have any questions, please do not hesitate to contact us at your convenience.

Thank you for the continuous cooperation.

Sincerely Yours,

TOSHIBA CORPORATION KEIHIN PRODUCT OPERATIONS

(Signature) *M. Watanabe* (Signature) *S. Sakamoto*
Mitsuo Watanabe Satoru Sakamoto
Deputy Manager Group Manager-Sourcing Quality
Sourcing Quality Engineer Engineering Group
Quality Assurance Department Quality Assurance Department

Cc: *F. Kume*
Foshin Kume
Senior Manager
Quality Assurance Department

1 / 1

<TOSHIBA Corp>
(ALL NUCLEAR)

MH MITSUBISHI HITACHI POWER SYSTEMS

Certificate No
2246-01

Certificate of Qualification

This is to certify that

DYM Co.,Ltd.

is a qualified partner of Mitsubishi Hitachi Power Systems, Ltd. for supplying the below stated item produced in accordance with the quality assurance system which passed the evaluation.

Address : #1506-4, DADAE-DONG, SAHA-GU, BUSAN, KOREA, 604-826

Item : BEARING (excluding for nuclear facilities).

You are requested to supply the above items in accordance with our general purchase specification "Quality Assurance General Requirement".

Date of Expiration : 31/October/2019

Date of Authorization : 09/August/2016

Authorized by : *H. Goto*
Hiroaki Goto
General Manager
Quality Management Department
Quality Management Division
Mitsubishi Hitachi Power Systems, Ltd.

<MHPS>
(ALL BEARING)

KHNP
KOREA HYDRO & NUCLEAR POWER CO., LTD.

기기수리업체 등록증

등록번호 : 영광수리-008 대표자 : 안성진
상호 : 디와이엠(주) 사업자등록번호 : 603-81-57785
주소 : 부산광역시 사하구 대동동 1506-4
자격유효기간 : 2008.05.29 - 2011.05.28

등록품목:

분류번호	품명	규격	품질등급
ME-WB-01	베어링메어링	전규격	R

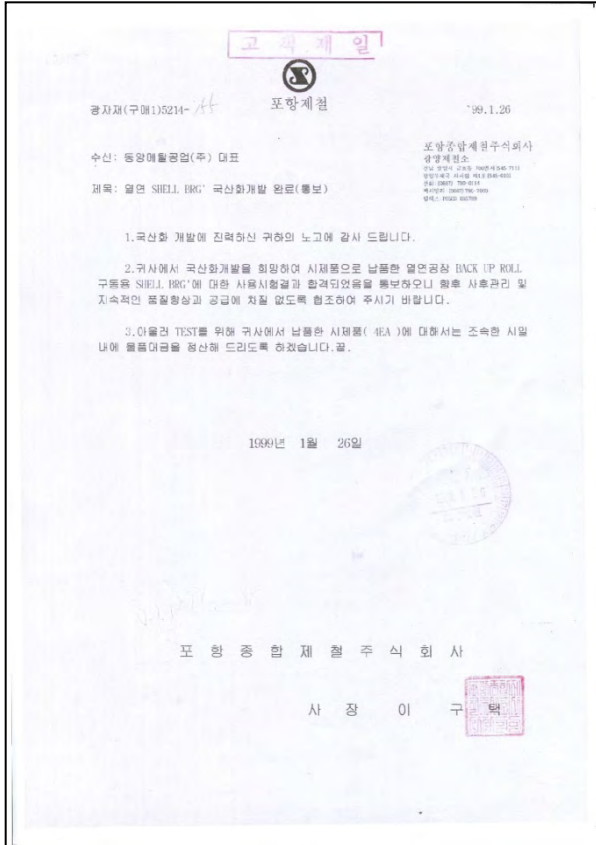
상기 업체는 우리 회사의 기기수리업체 등록 절차에 따라 심사한 결과 기기수리 공급업체로 등록되었음을 증명합니다.

DYM 008. #6. 0

한국수력원자력주식회사 사장

<Korea Hydro &
Nuclear Power Co.,Ltd>

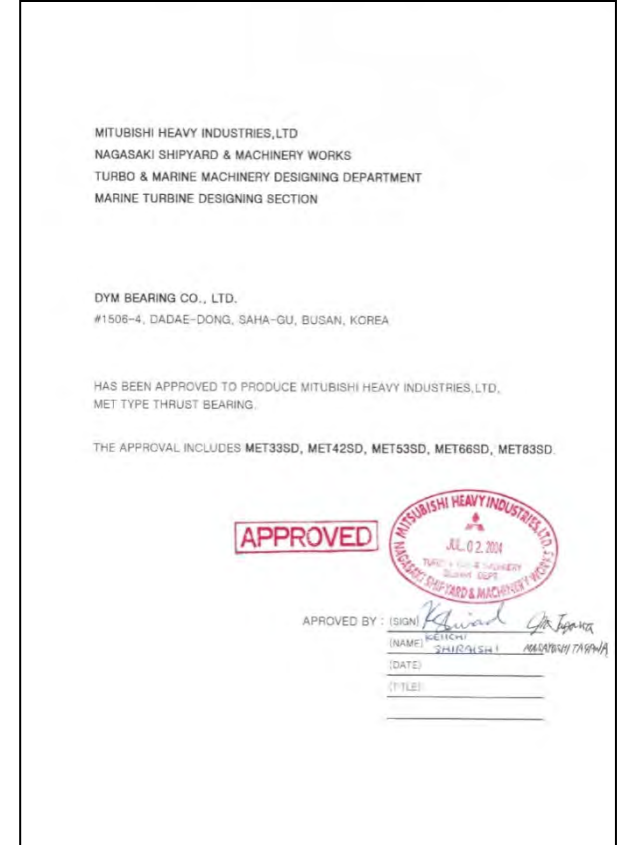
Certificates of Approval



<POSCO>



<BV CERT>



<MITUBISHI>

Certificates of Approval

Supplier Qualification Form			
PART I - IDENTIFICATION			
Oracle Code	471062	Qual Status	Closed
Supplier Name	Dong Yang Metal Inc. Co., Ltd	Supplier Site	Pusan, -
Supplier Contact	Kim Myung	Buyer Name	
Supplier Phone	82-51-264-0018	SQE Name	Galazka, Frank
If Subler, Name	see list		
SDR			
Product Line/Program			
Business	EP-Generator	Qual Type	A
Part	Elliptical Journal Bearing and H2 Seals-23 Inch	Drawing #	112E4786,112E4787,194D7074
Process	ECM/EDM Machining,Other	Customer	Multiple
Supp Qual #	SQ-010056	PO #	N/A
PART II			
Qualification Req	See attached FPQ Closure Initiative		
Qual Restrictions	Frozen MPP		
GE Frozen MPP #	MPP06162-05863	MPE MQ #	05-MQ-147
Qualification Team Participants - Minimum Sourcing Quality and Engineering Signature (To be signed after qualification is complete)			
Required	Approved	Rejected	Department
<input checked="" type="checkbox"/>	<input checked="" type="checkbox"/>	<input type="checkbox"/>	SQE
<input checked="" type="checkbox"/>	<input checked="" type="checkbox"/>	<input type="checkbox"/>	MPE
<input checked="" type="checkbox"/>	<input checked="" type="checkbox"/>	<input type="checkbox"/>	Design Eng
Printed Name	Signature	Date	
Galazka Frank		09/18/2006	
Stonitsch Ray		09/18/2006	
Fitzmorris Daniel		07/28/2005	
Date Completed	09/18/2006	PSSO #	6.2.3.A

<GE POWER & WATER>

SIEMENS Supplier Certificate

We hereby certify that

DYM CO., LTD South Korea

is listed as an approved supplier for

Siemens Energy Sector, Mülheim Factory

for steam turbine bearings
(valid until 2009-08-31)

Mülheim, 30.01.2009

Christian Weber
Director, Supply Management

Regier Beschner
Director, Supply Quality Management

<SIEMENS>
(STEAM TURBINE)

POWER SYSTEMS THERMAL PRODUCTS

ALSTOM (Switzerland) Ltd
Strom-Berlei Strasse 7
5403 Baden, Switzerland
Phone: +41 (0)56 206 17 31
Fax: +41 (0)56 206 17 13
www.alstom.com

Power Manager
Stephen Palmer
Department
TPSCC
Room
423 826 3046
Fax
423 826 3001
E-Mail
Stephen.palmer@power.alstom.com

ALSTOM

Mr. Sung-Jin Ahn,
Executive Director,
DYM Co., LTD,
604-826, 81506-4
Dadae-Dong, Saha-Gu,
Busan
Korea

23 December, 2010

Supplier Evaluation – DYM Co., Ltd.

Dear Mr. Ahn,

We would like to extend our thanks to you and your company for accommodating Alstom Thermal Products during our recent visit to carry out a supplier evaluation.

Alstom Thermal Products is pleased to confirm. DYM Co., Ltd, Busan, Korea site status as an

'Approved Supplier – with conditions'

Our overall impression of DYM Co., Ltd, is that your Quality Management System to ISO9001:2008, Environmental, Health & Safety (EHS) management systems and technical processes are sufficient and that you are able to supply **Bearings** of the quality required by Alstom.

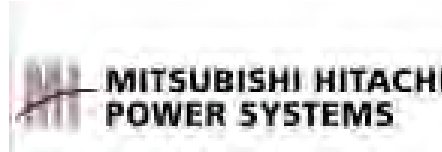
However, we note below some specific findings from the audit as discussed during the closing meeting (N = Non conformance, O = Observation, I = Improvement suggestion). A formal written response, documented on your internal corrective action form is required for each non-conformance and observation. These corrective action response(s) is required within 30 days of receipt of this notification.

Page 1 of 4

TPSCC Approved WC Supplier Letter DYM Co Ltd.doc

<ALSTOM>
(BEARING)

Our Customers



Main Facilities

DOOSAN PUMA UTS 1620

- Scope : $\varnothing 2000$ x H1556
- Stroke (X/Z) : 1727 / 960 mm
- Installed on Sep. 16, 2014



Main Facilities



◆ DOOSAN Puma 280 Turn/Mill Centre

- Maximum machining range : $\phi 420 \times L658$, 3600 r/m
- STROKE
 - X : 242 mm
 - C : 360 mm
 - Z : 680 mm

Newly Installed on Sep. 2015



◆ DOOSAN HM50 MCT

- Maximum machining range : 500 x 500mm
- STROKE
 - X : 710 mm
 - C : 600 mm
 - Z : 600 mm

Main Facilities



◆ YAMAZAKI MAZAK NEXUS 8800 with 6 Pallet

- Maximum machining range : $\phi 1,450 \times H1,450 / 2,200 \text{ kg}$
(FH 8,800 : $\phi 1,250 \times H1,250 / 2,200 \text{ kg}$)
- STROKE
 - X : 1,400 mm
 - Y : 1,200 mm
 - Z : 1,325 mm

#1. Installed on JAN. 2009.



◆ DOOSAN DS – 130C

- Maximum machining range : $L3,000 \times H2,000 \times W1,600 / 15,000 \text{ kg}$
(FH 4,000 x H2,000 x H1,600 / 15,000 kg)
- STROKE
 - X : 2,800 mm
 - Y : 1,800 mm
 - Z : 1,425 mm

#1. Installed on MAR. 2009.

#2. Installed on APR. 2009.

Main Facilities

Horizontal Boring Machine

- Stroke (X/Z) : 1600 / 1300 mm, 4 Equip.

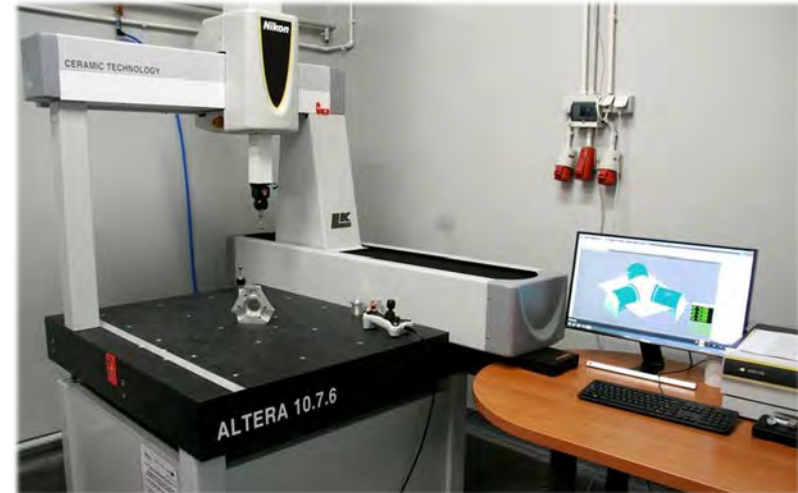
Vertical Turning Machine

- Table size : 1600mm, 16 Equip



Main Facilities

3D MEASURING INSTRUMENT

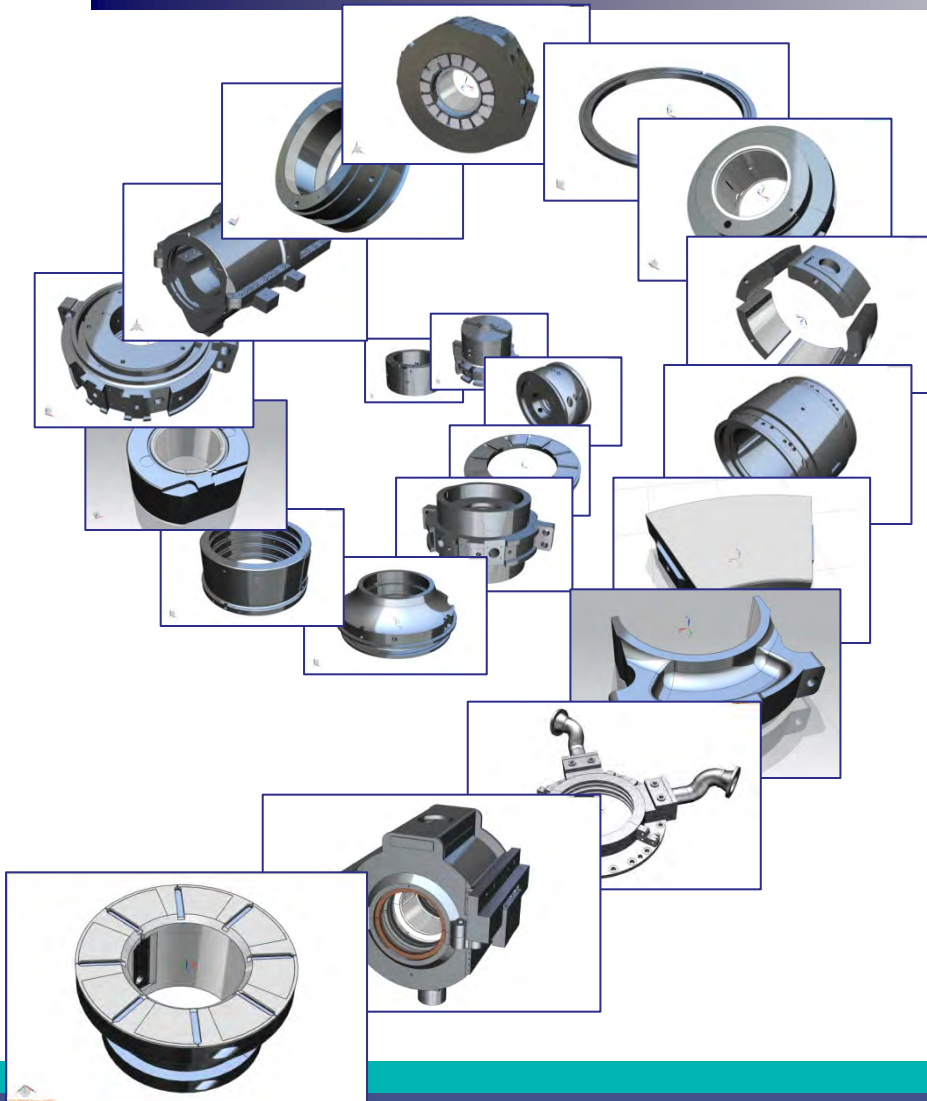


NIKON ALTERA 15.12.10

SCANNING STROKE

- X : 1,525mm
- Y : 1,220mm
- Z : 1,016mm
- MAXIMUM WEIGHT : 5,500kg
- ACCURACY : 1.9 μ m

NX9 Model based Manufacturing



1. Beforehand solution for error
2. Be easy to feedback
3. Data Verification

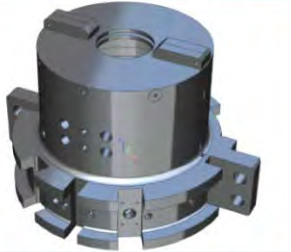


1. Improve the quality and reduce the lead time
2. Application 3. Data Verification to master data piece for machining
3. Competitive price

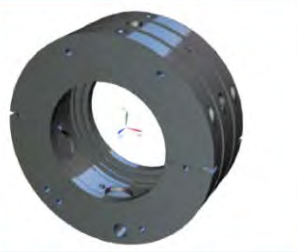
Application Key – Steam Turbines

STEAM TURBINE BEARING

OVERHUNG THRUST



DTP 6PAD



COMBINED BEARING



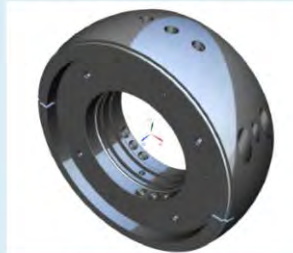
THRUST BEARING RING



THRUST BRG CASING/RING



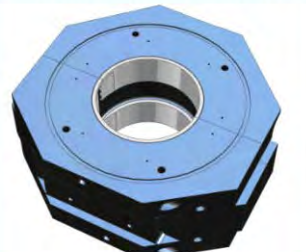
THRUST BEARING CASING



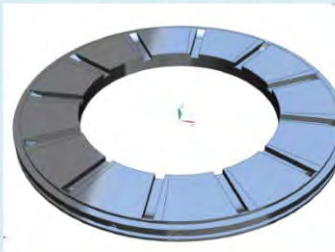
SHORT ELLIPTICAL BRG



COMBINED BEARING



THRUST PLATE



TILTING PAD BEARINGS

THRUST BEARINGS

BEARING RINGS

ELLIPTICAL BEARINGS

THRUST PLATES

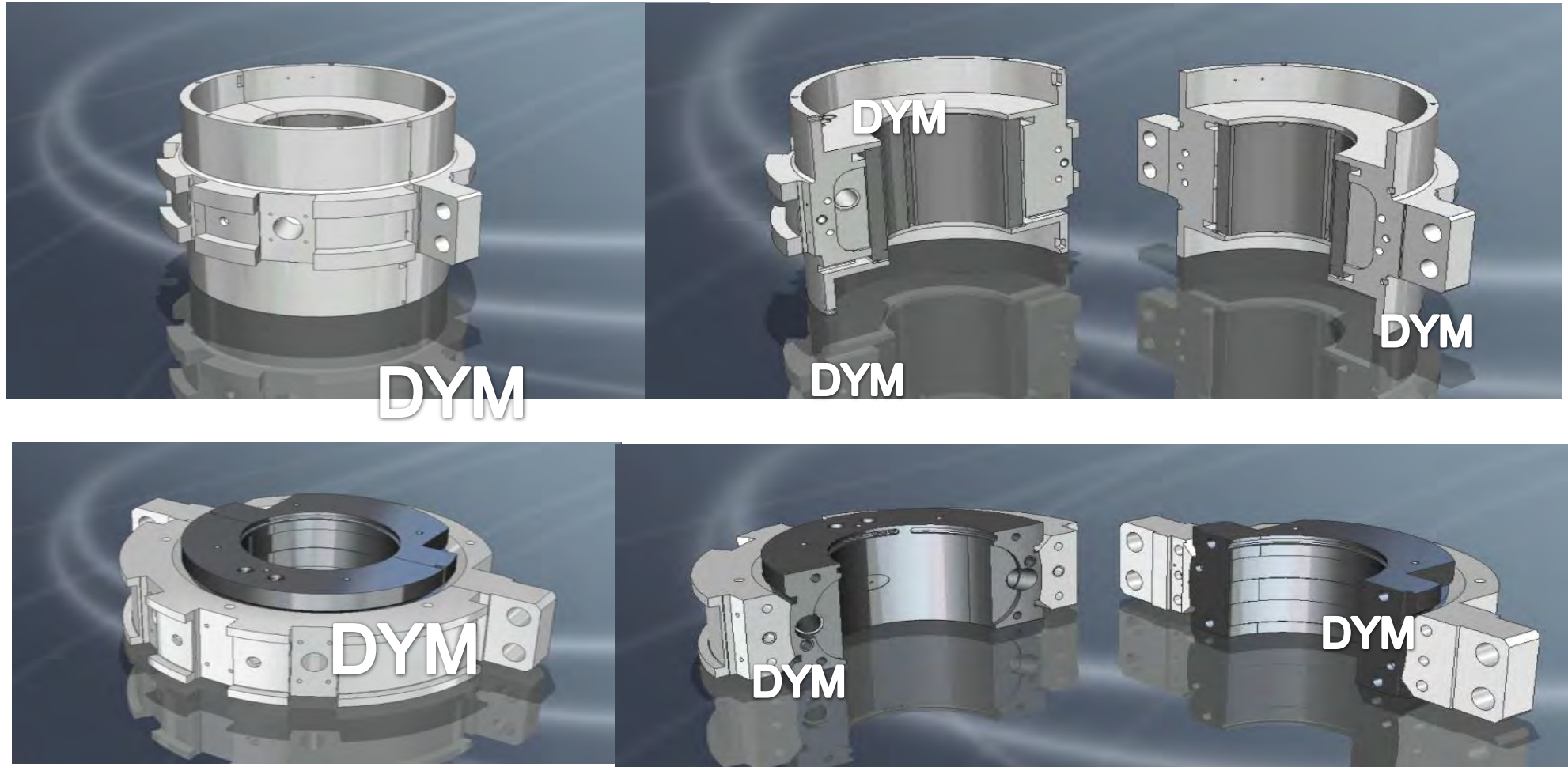
JOURNAL BEARINGS

COMBINED THRUST BEARINGS

LINER PADS

Model Based Manufacturing

4 PAD THRUST BEARING ASSEMBLY SHORTEND BEARING & BEARING RING ASSEMBLY



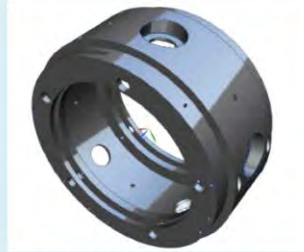
Application Key – Gas Turbines

GAS TURBINE BEARING

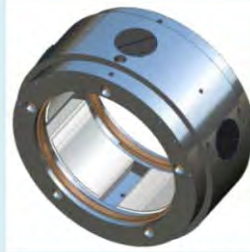
LINER PAD



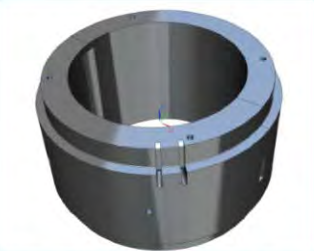
RETAINER



LINER BEARING #3



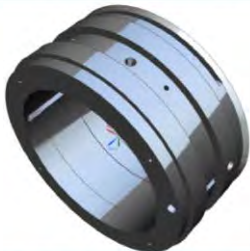
BEARING LINER #1



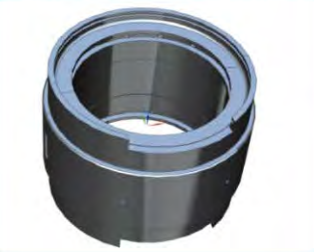
BEARING LINER #2



BEARING LINER #1



BEARING LINER #2 ASS'Y



BEARING HOUSING #2



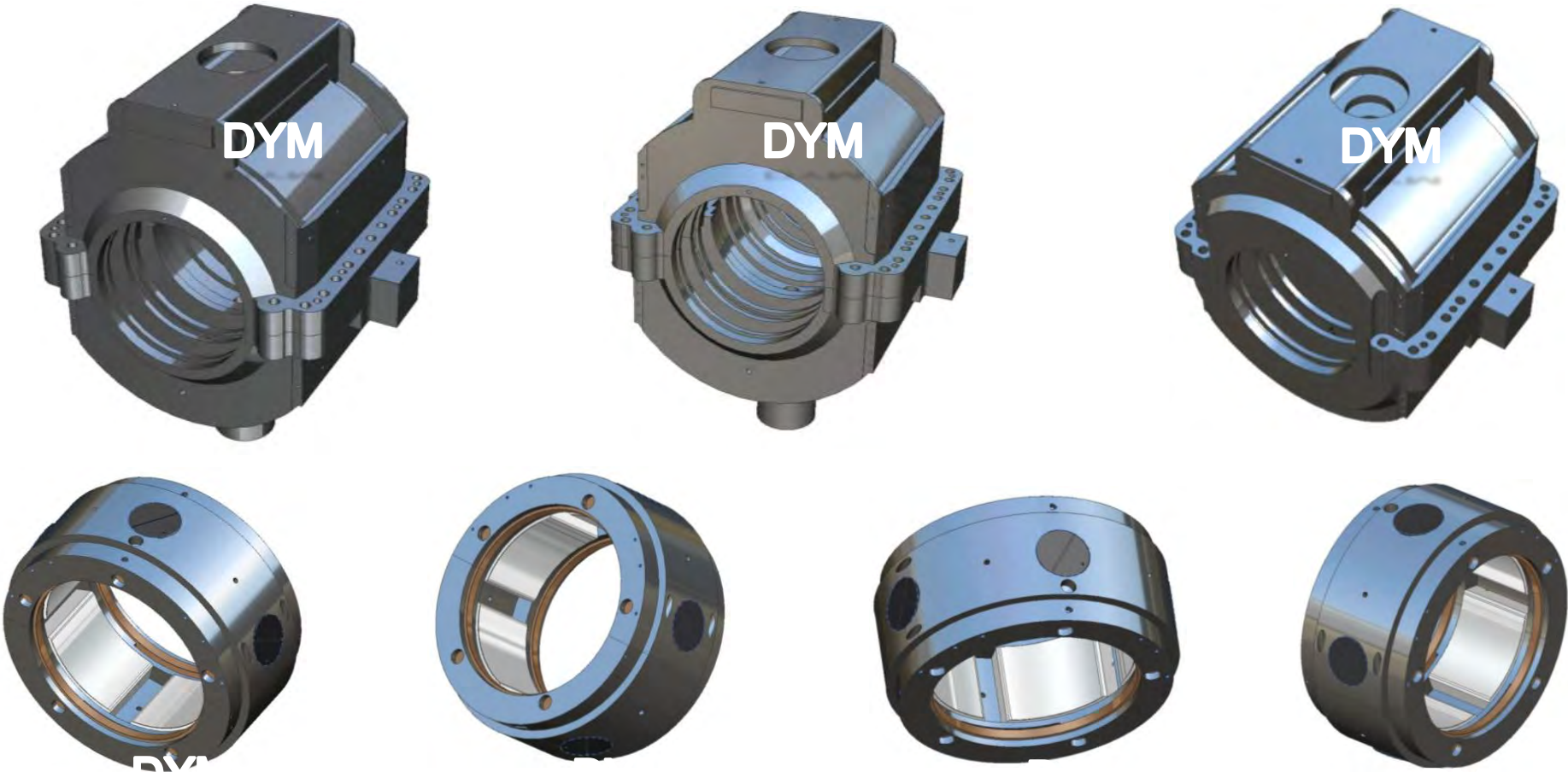
BEARING HOUSING #3



- LINER BEARINGS
- LINER PADS
- BEARING HOUSINGS
- OIL DEFELECTORS
- SEAL STATIONARIES
- RETAINERS

Model Based Manufacturing

7EA #2. BEARING HOUSING & LINER ASSEMBLY 5PADS



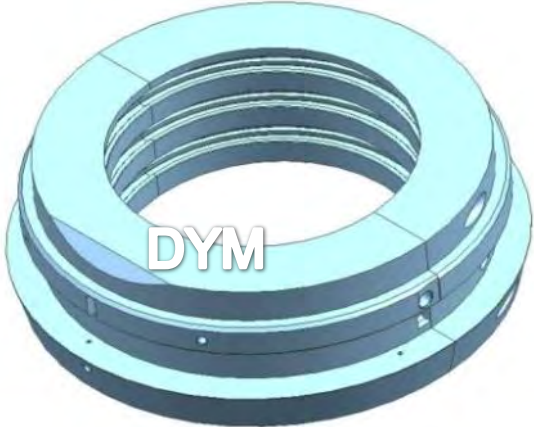
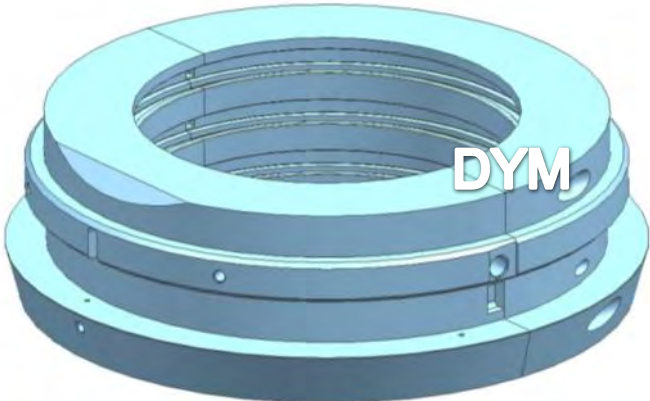
Application Key – PACKING CASING



PACKING CASINGS
PACKING HEADS
PACKING BOXES

Model Based Manufacturing

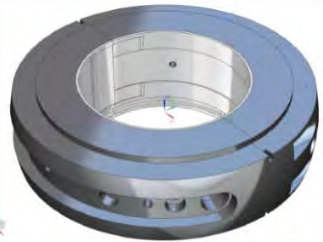
PACKING CASING



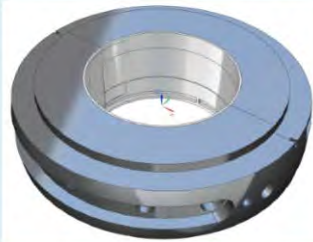
Application Key - Generators

GENERATOR BEARING

330 ENDSHIELD LINER



390 ENDSHIELD LINER



450 ENDSHIELD LINER



324 ENDSHIELD LINER



H2 SEAL RING



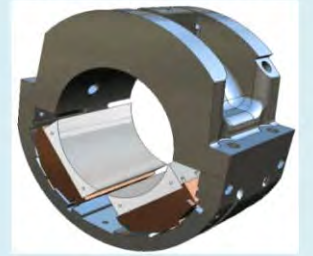
BEARING BUSH



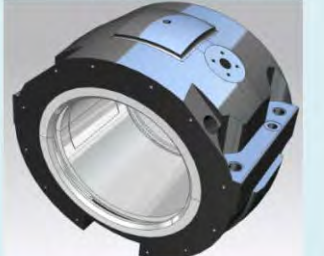
BEARING METAL



TILTING PAD BEARING



SLEEVE BEARING



324 ENDSHIELD BEARING

7FH2 ENDSHIELD BEARING

390 H ENDSHIELD BEARING

330 H ENDSHIELD BEARING

390 H ENDSHIELD BEARING

450 H ENDSHIELD BEARING

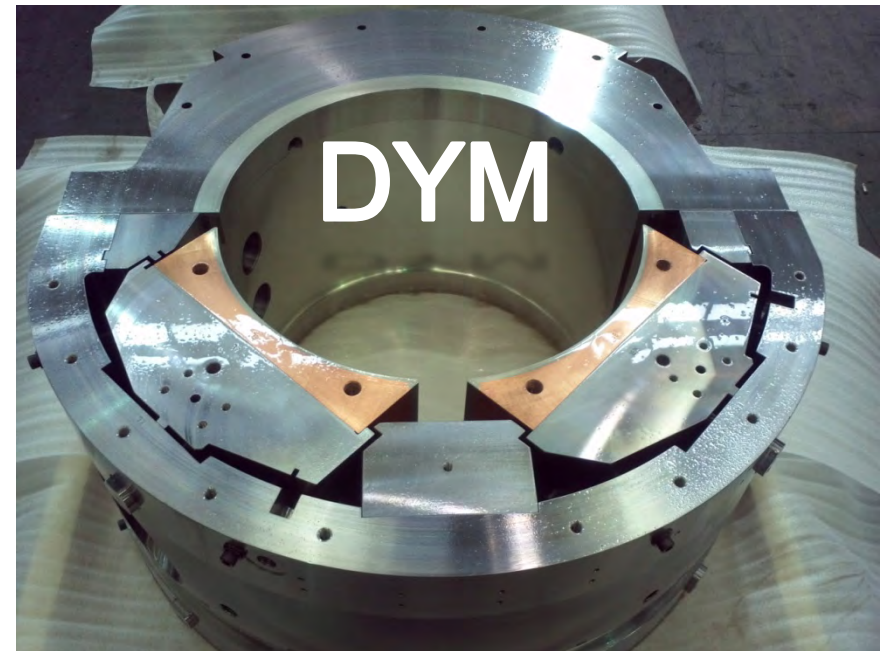
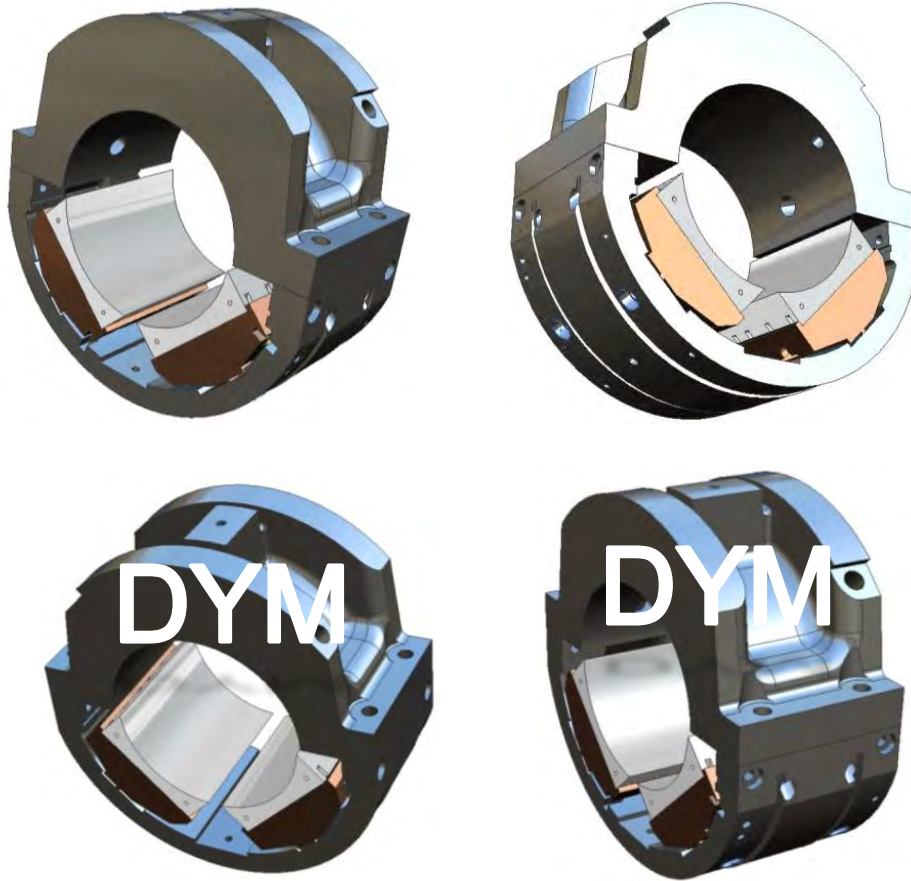
H2 Seal Rings

BEARING BUSH

TILTING PAD BEARING

Model Based Manufacturing

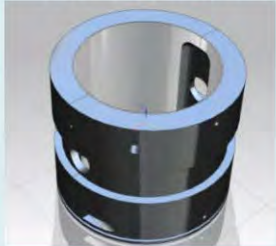
T.P450 BEARING(660MW)



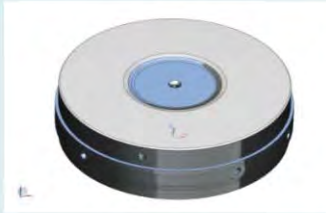
Application Key – Reduction Gear & Pump

REDUCTION GEAR & PUMP

RADIAL BEARING



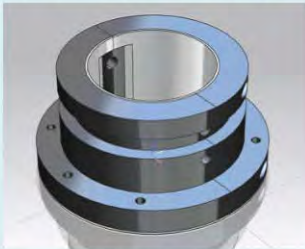
THRUST PAD



THRUST PAD



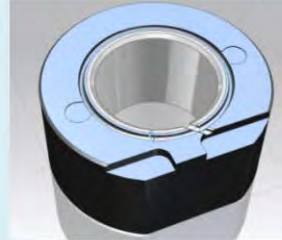
PUMP SHAFT BEARING



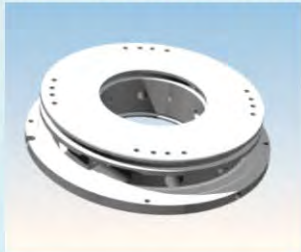
PUMP SHAFT BEARING



PUMP GEAR BEARING



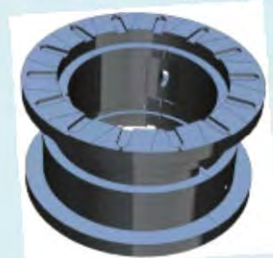
COMPRESSOR BEARING



COMPRESSOR BEARING



THRUST BEARING



THRUST PAD

THRUST BEARING

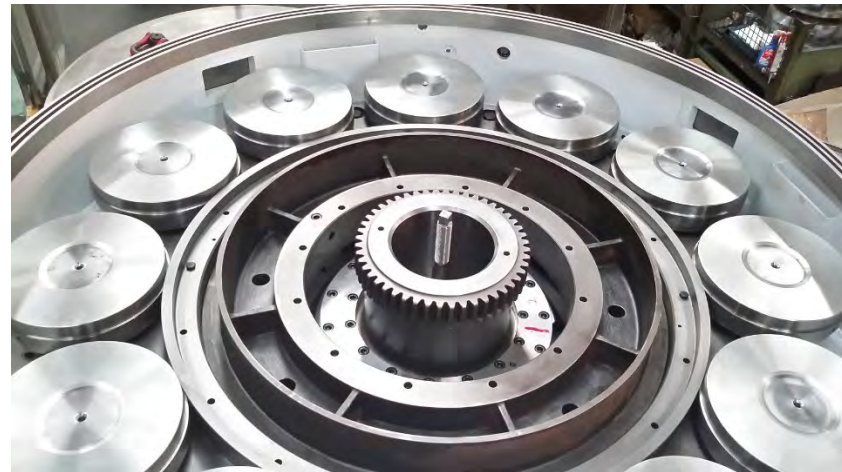
RADIAL BEARING

PUMP & SHAFT BEARING

COMPRESSOR BEARING

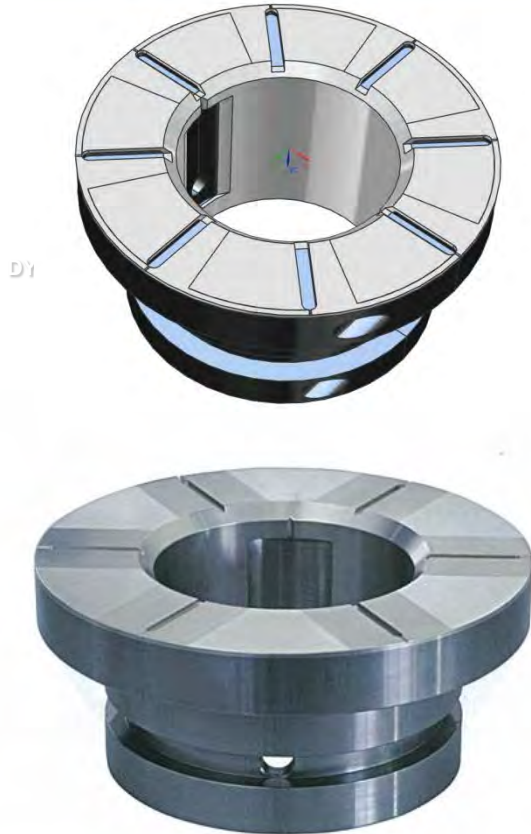
Model Based Manufacturing

REDUCTION GEAR THRUST PAD



Model Based Manufacturing

BEARING-SHAFT #4



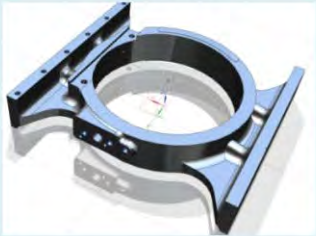
BEARING-PUMP GEAR



Application Key – Marine Engine

MARINE ENGINE

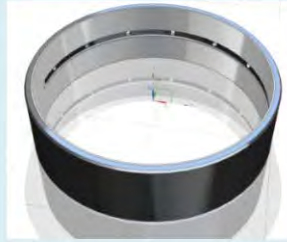
GUIDE SHOE



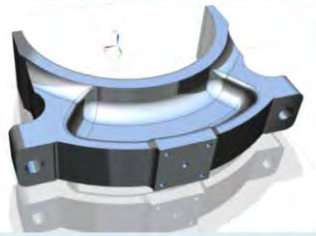
BEARING COVER



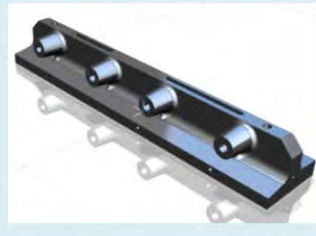
SHAFT BEARING



MAIN BEARING COVER



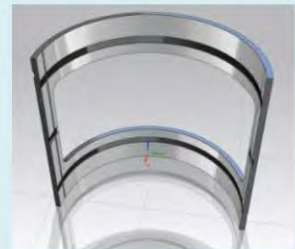
GUIDE RAIL



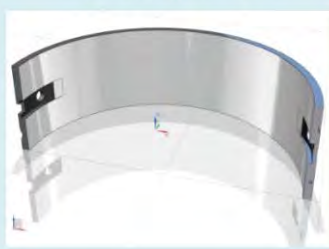
SEGMENT



CROSS HEAD BEARING



BEARING SHELL



GUIDE DISC



MAIN BEARING

BEARING SHELL

GUIDE SHOE

CON.ROD BEARING

OIL DISTRIBUTOR RING

BEARING COVER

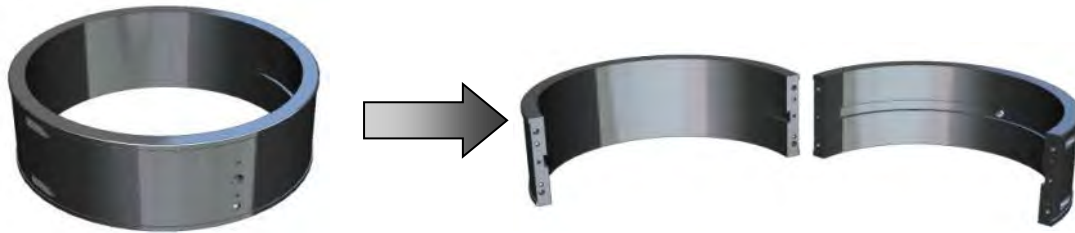
GUIDE RAIL

SEGMENT

GUIDE DISC

Model Based Manufacturing

MAIN BEARING (S50MC)



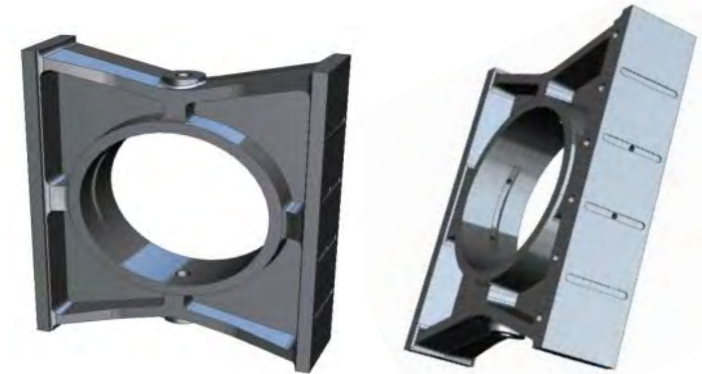
SEGMENT(S50MC)



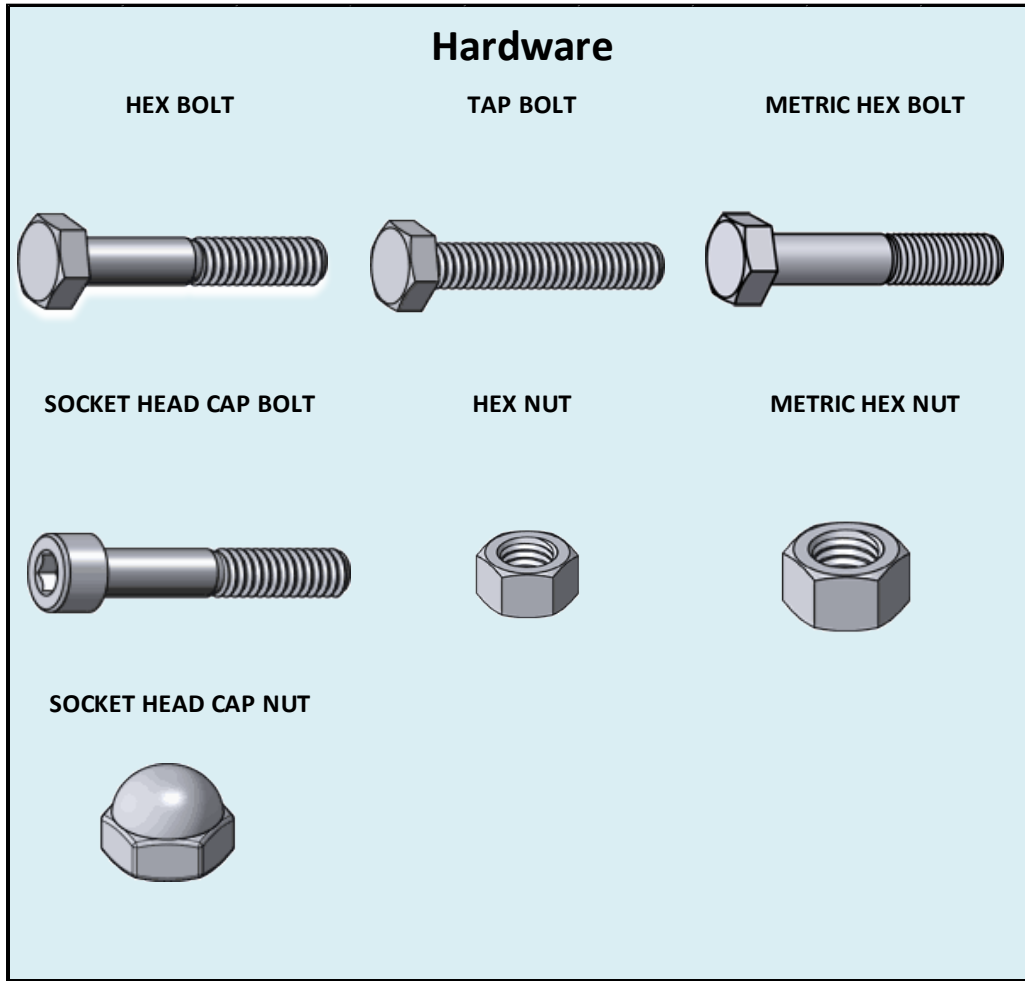
OIL DIST. RING(ø575)



GUIDE SHOE(S50MC)



Application Key – Parts



SOCKET HEAD BOLTS

TAP BOLTS

ADJ PADS

SHIMS

PLATES

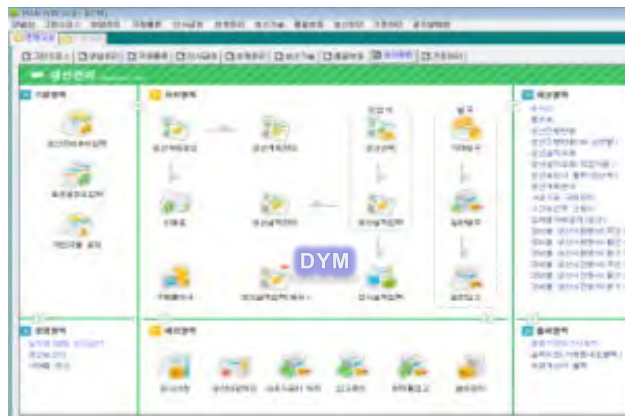
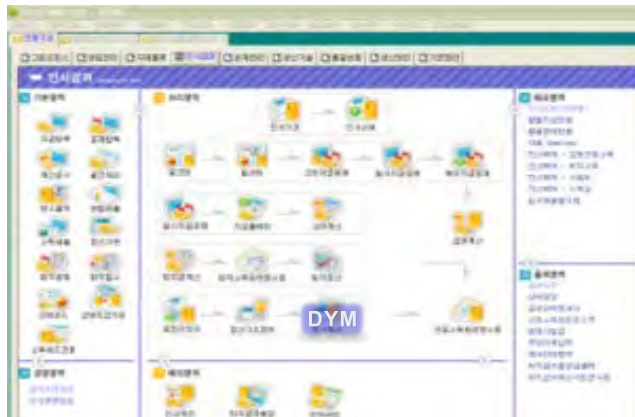
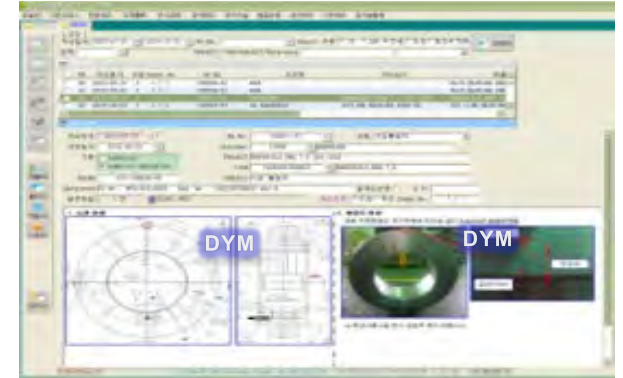
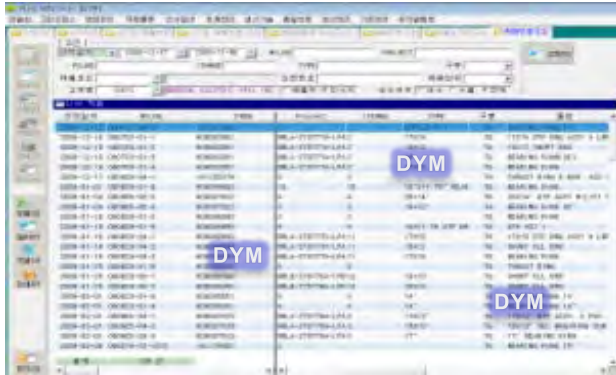
BUSHINGS

PLUG PIPES

ORIFICE PLUGS

WASHERS

Enterprise Resource Planning System

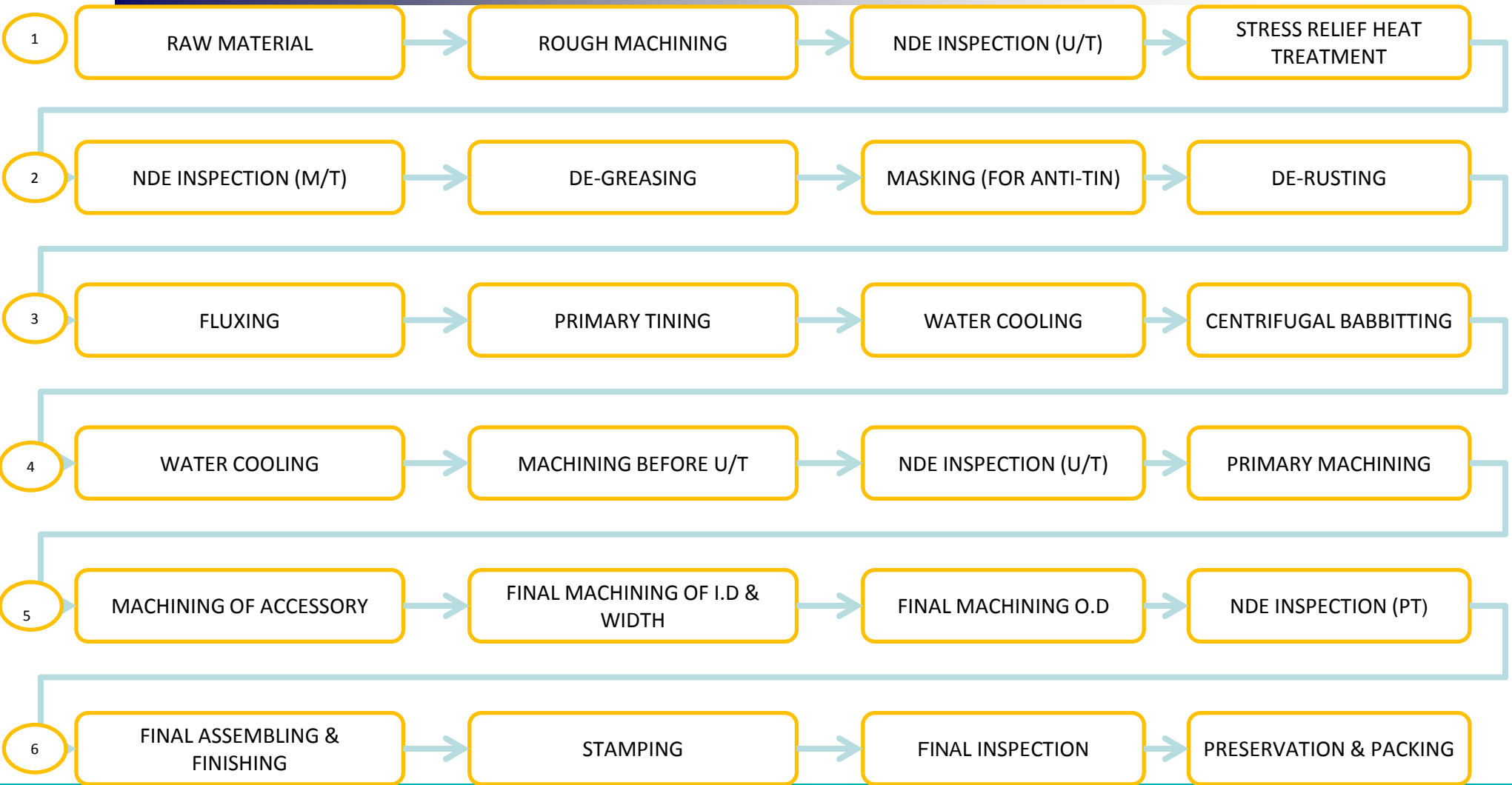


Point of Product System



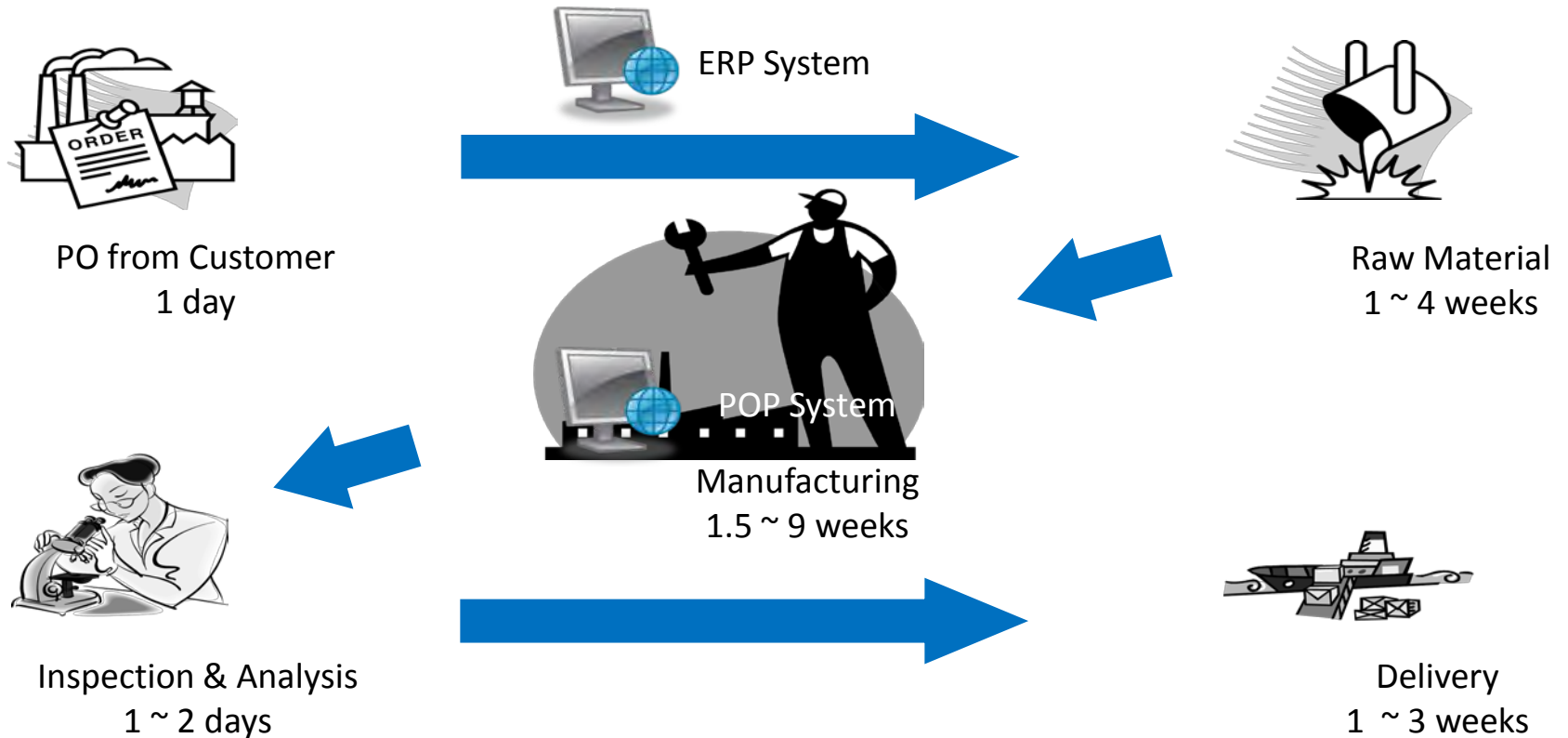
※ POP system can handle the separated resources in each part of factory for a plan of shot period, order operating, factory inventory, process control and inspection data gathering.

Manufacturing Process



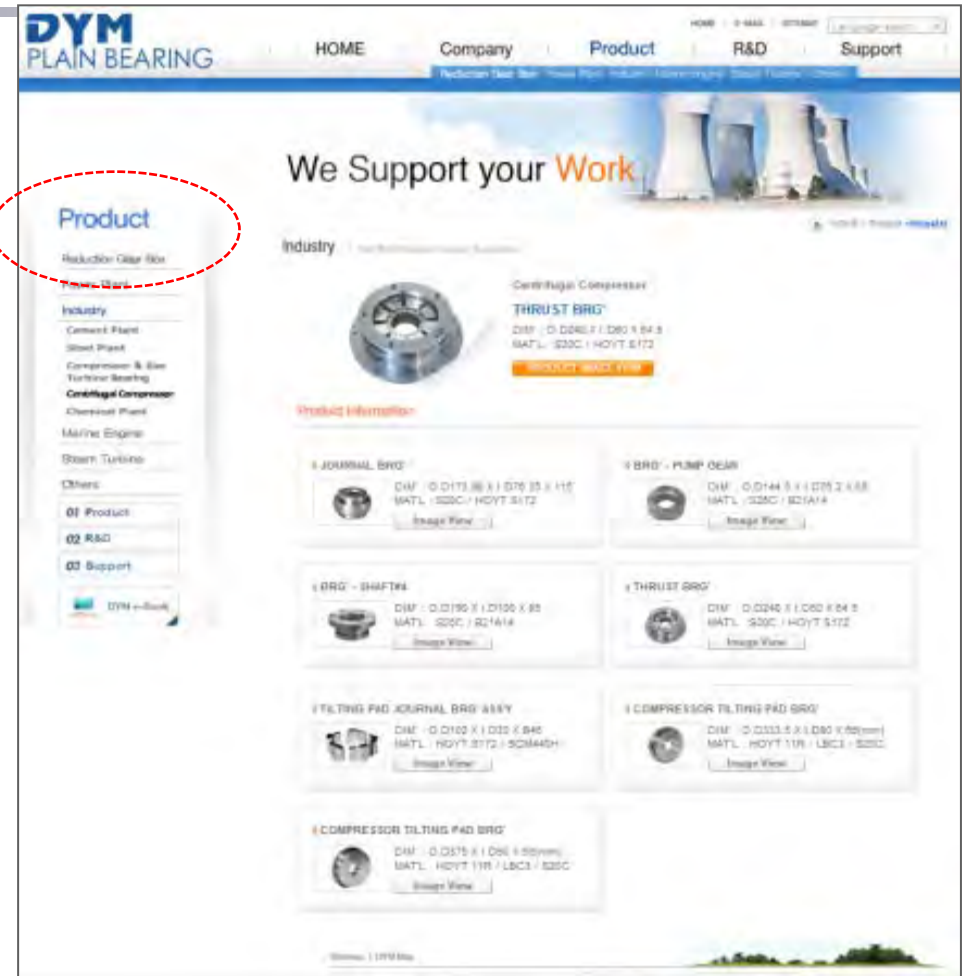
Manufacturing Lead Time

ISO 9001, 14001, OHSAS 18001



Total weeks from PO to Delivery : 4 weeks(minimum) ~ 12 weeks (maximum)

Website – WWW.DYMBRG.COM





THANK YOU FOR YOUR ATTENTION.

Sung-Jin (SJ) Ahn / President
DYM CO., LTD.
Mobile : +82 10 3587 8797
Phone : +82 51 264 0018 / Fax : +82 51 264 0017
E-mail : s.d.park@dymint.com.

Su-Dong (SD) Park / Sales & Marketing Manager
DYM CO., LTD.
Mobile : +82 10 5005 4069
Phone : +82 51 264 0018 / Fax : +82 51 264 0017
E-mail : s.d.park@dymint.com.